

Client	Value	Location
<b>Bassari</b>	<b>US\$12M</b>	<b>Senegal</b>

Mincore assisted Bassari by delivering a Civil Mechanical, Piping and Structural Plant Design (CMPS) package for their Makabingui Project. The design package delivered in less than 12 weeks for the low CAPEX project (US\$7m) included:

- Civil engineering including design
- Mechanical engineering
- Piping engineering
- Structural engineering
- Trade off studies
- Procurement Management

**Makabingui Project**

The Makabingui Gold Project currently hosts a Mineral Resource, which comprises 11.9m tonnes averaging 2.6 g/t gold for a contained 1 million ounces of gold classified into the Indicated and Inferred Resource categories. The initial open pit mining phase focuses on the Indicated Resource based on a conventional gravity and Carbon in Leach (CIL) processing circuit.



Our high quality supply sources maximize off site work to increase ROI and reduce CAPEX.

**Project Highlights:**

**Integrated Process Design with Engineering Support**

Process circuits were simplified while CAPEX costs remained low as procurement, process and engineering were unified at the beginning of the project. Engineers and designers utilized existing knowledge to ensure for a 'best practice' flowsheet.

**Major Deliverables**

- 200 tonnes steel
- 300m<sup>3</sup> concrete
- Mobile primary and secondary crusher
- Tertiary crushing
- Jig circuit
- 2 Mills
- 2 Knelson Concentrators
- Leaching and adsorption circuit
- 3 tonnes atmospheric Zadra Elution circuit
- The plant is designed to be expandable from 300kTPA to 1MTPA

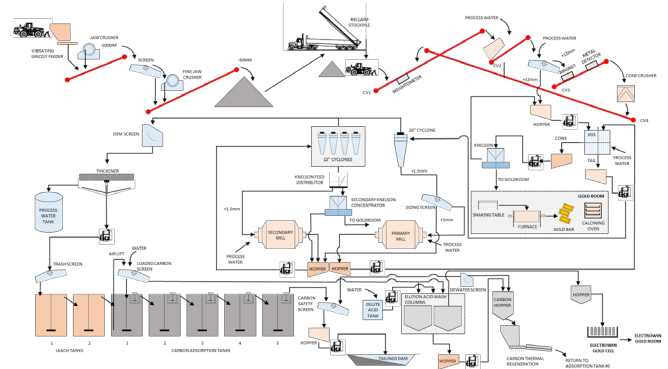


Figure 1: Makabingui Flow Sheet

**Advanced Procurement Support**

Mincore together with its strong Vendor alliances was able to deliver and expedite the delivery of key processing equipment to ensure delivery to spec and on schedule. Work included:

- Preparation of procurement packs (datasheet, scope of work, specs, and pricing schedules)
- Technical bid reviews
- Preparation of Civil, SMP and E&I scope of work packs for site condition activities.
- QA/Expediting support
- Vendor design reviews
- Design reviews with other design packages.

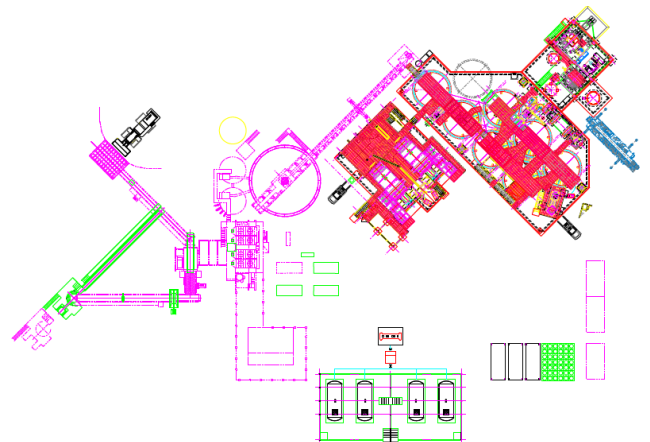


Figure 2: Process Plant Layout

**Overall CAPEX Reduction**

- Significant proven savings achieved through our Chinese procurement links
- Significant reduction in delivery lead times and shipping costs through consolidation at source.

Mincore is working with ARC Vanture JV to source and procure quality cost efficient mining equipment from China



**Learn how you can partner with Mincore to optimise your project.**

+61 3 9670 3410  
info@mincore.com.au  
www.mincore.com.au